

What your lips say about you

The secret to your true character isn't in your eyes after all. Expert Poppy King unveils the connection between your personal psyche and your pout. **By Cat Marnell**



Zen



Jennifer Aniston

If your lips are like Jen's...

You're soulful. "Aniston's lips go up on the left, down on the right, which means she's a deep thinker but also fun," says Poppy King, founder of Lipstick Queen in New York City, who has noticed links between lips and personality in her line of work. For Zen types like Aniston, earthy colors are best; first, line edges with a clear liner to define subtly.



Maybelline New York Color Sensational Lip Liner in Clear, \$6



Determined



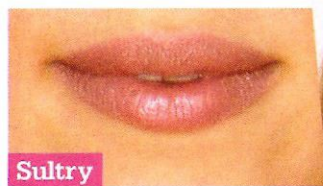
Eva Longoria

If your lips are like Eva's...

You're a go-getter. Longoria's full lips angle down slightly, which means she's serious; they also pull in at the edges, indicating she's very disciplined and high-achieving, King says. Avoid bold colors—they can look clownish on generous puckers. Opt for a neutral shade with a touch of sheen; it's more flattering.



L'Oréal Paris Colour Juice Sheer Juicy Lipgloss in Strawberry Smoothie, \$8



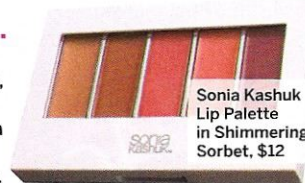
Sultry



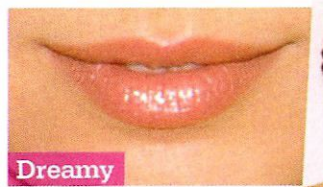
Scarlett Johansson

If your lips are like Scarlett's...

You're a temptress. The line between Johansson's top and bottom lip is straight but curls at the outer edges, which shows that she's seductive and good-humored. Pick up a lipstick palette, then turn heads by layering a berry under a glistening nude, King says. The deep hue hints at just-kissed lips, and the sheen adds softness.



Sonia Kashuk Lip Palette in Shimmering Sorbet, \$12



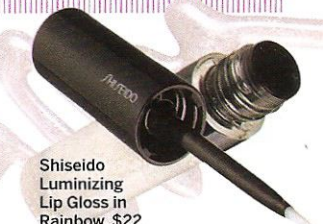
Dreamy



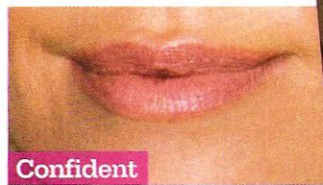
Mila Kunis

If your lips are like Mila's...

You're a dreamer. Kunis's lips turn upward and then pull inward at the outer edges, suggesting she's ethereal, bright, idealistic and hopeful, King says. To highlight your lips' unique shape, pick a formula that plays with light; a silvery, high-shine gloss makes a statement without looking garish.



Shiseido Luminizing Lip Gloss in Rainbow, \$22



Confident



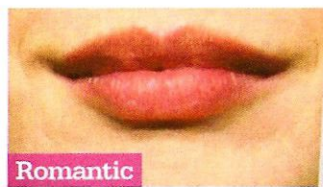
Charlize Theron

If your lips are like Charlize's...

You're a leader. Theron's lips are very curved and have a natural upward slope that reveals drive and confidence. Use color lightly; a heavy coat can hide those curves, King says. With a small brush, pat concealer around the outside of lips to play up the distinct shape and create a contrast that brings out lips' natural rosiness.



DiorSkin Sculpt Concealer, \$32



Romantic



Anne Hathaway

If your lips are like Anne's...

You're a lover. The corners of Hathaway's mouth pull back, which means she is romantic and shy. Yet at the outer edges they turn upward, hinting at a big heart, King says. Choose a deep rose or berry lipstick to show your tender side. For a subtle effect, dab it on with a finger for a pretty (and slightly sexy) wash of color.



Lancôme L'Absolu Rouge in Rose Divine, \$29